

# SOYBEANS

## S007-Y4

RM:  
0.05

CHU:  
2350



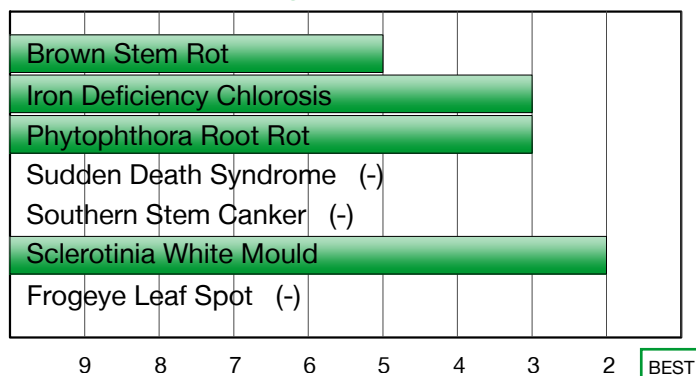
### STANDARD FOR YIELD WITH BROAD ADAPTATION

- Very good Iron Deficiency Chlorosis tolerance
- Strong Phytophthora Root Rot field tolerance with the Rps1c gene
- Strong emergence with excellent Sclerotinia White Mould resistance

### Plant Characteristics

Plant Height	<b>Medium-Short</b>
Canopy/Plant Type	<b>Medium</b>
Branching	<b>Moderate</b>
Growth Habit	<b>Indeterminate</b>
Flower Colour	<b>Purple</b>
Pubescence Colour	<b>Light Tawny</b>
Pod Colour	<b>Tan</b>
Hilum Colour	<b>Imperfect Yellow</b>

### Disease Ratings



### Agronomic Traits

Emergence	<b>3</b>
Standability	<b>2</b>
Shatter Tolerance	<b>4</b>
Stress Tolerance	<b>4</b>
Green Stem	-
Estimated Seed Size	<b>Small</b>
Avg. Protein %	-
Avg. Oil %	-
Narrow Rows	<b>2</b>
Wide Rows	<b>2</b>

### Adaptation to Soil Types

Drought Prone	●
High pH*	●
Highly Productive	★
Moderate/Variable Environments	●
Poorly Drained	●

### Diseases and Pests

Phytophthora Root Rot (PRR) Source	<b>Rps1c</b>
Soybean Cyst Nematode (SCN) Races	<b>S</b>
(SCN) Source	<b>NA</b>

For more information: Visit [Syngenta.ca](http://Syngenta.ca), contact our Customer Interaction Centre at 1-87-SYNGENTA, or follow @SyngentaCanada on Twitter and tweet us your questions using #AskSYN.



Performance evaluations are based on field observations and public information. Data from multiple locations and years should be consulted whenever possible. Individual results may vary depending on local growing, soil and weather conditions.

Always read and follow label directions. The Alliance Frame and Syngenta logo are trademarks of a Syngenta Group Company. Genuity®, Genuity and Design®, Genuity Icons, and Roundup Ready 2 Yield® are registered trademarks of Monsanto Technology LLC used under license. Syngenta Soybean varieties are protected under granted or pending U.S. or Canadian variety patents and other intellectual property rights, regardless of the trait(s) within the seed. Follow grain marketing and all other stewardship directions. Details of these requirements can be found in the Syngenta Stewardship Agreement. ©2016 Syngenta.

1-9 Scale: 1 = Best, 9 = Worst, (-) = Not Available, NA = Not Applicable.

Icon Scale: ★ Best Choice ● Good Choice ▼ Average to Slightly Below Average ✗ Not Recommended

\* Represents an assessment of stand establishment, chlorosis severity and yield performance

Published 22 June 2016. For use until 01 July 2017.